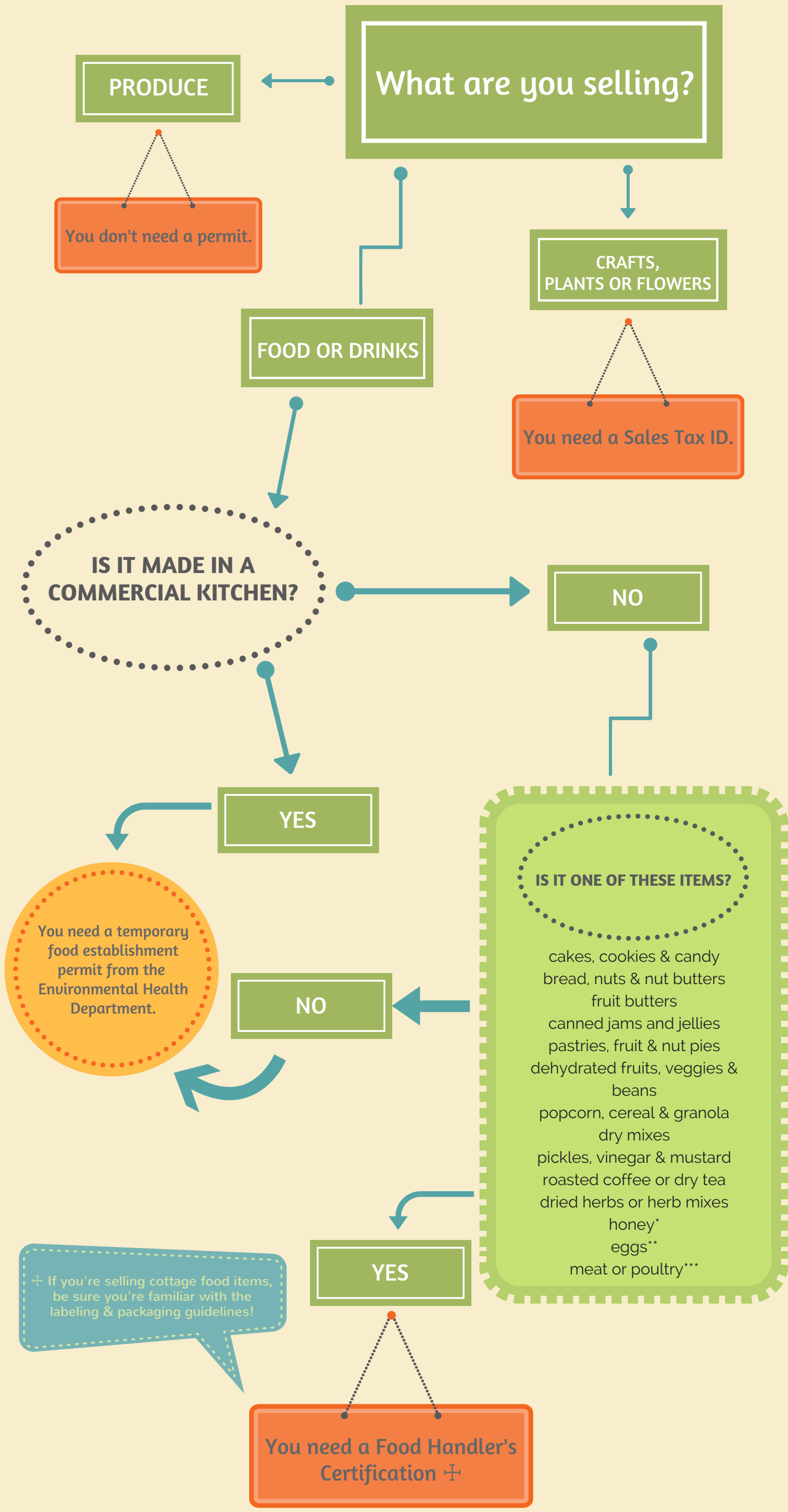


# DO I NEED A PERMIT?

AMARILLO COMMUNITY MARKET



RESOURCES:

Sales Tax ID: <http://www.cpa.state.tx.us/taxpermit/>

TFE Permit Application: [http://amarillo.gov/departments/enviromental\\_health/pdf/TempApplication.pdf](http://amarillo.gov/departments/enviromental_health/pdf/TempApplication.pdf)

Texas Cottage Food Law: <http://texascottagefoodlaw.com/Frequently-Asked-Questions>

Food Handler's Certification: <http://amarillotx.foodhandlerclasses.com/>

\*Honey is regulated by this law: <http://texasbeekeepers.org/honey-exemption/>

\*\*Eggs must be stored at an ambient temperature of 45° Fahrenheit or less

\*\*\*Meat or poultry products must come from animals processed in compliance with the regulations for livestock processing (Texas Health & Safety Code Chapter 433)